

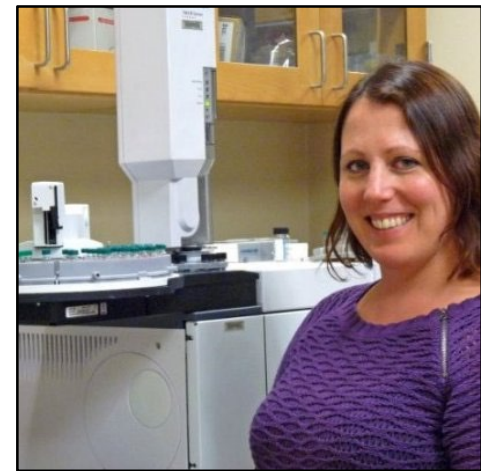
Early Career Appointee at CBI – Breeanna Urbanowicz

What is the objective?

- CBI offers Early Career Assignments to junior CBI scientists to work at ORNL for at least a three-month period. Prior to selection, each Early Career person has to make arrangements with an ORNL-CBI researcher to outline a research task to be completed while on site. The Leadership Team and Research Council evaluates the proposal and the CV of the candidate to assess the suitability for this position.
- The main goals of this assignment are:
 - Career development - Work within the CBI management team and engage on the administrative side (50% of the time). Breeanna will be involved in planning for the DOE Annual Review, assist in the Affiliates program, and will compose monthly highlights to DOE-BER.
 - CBI research - Work with an ORNL-CBI researcher (50% of the time) to continue their research and expand their publication record. Breeanna will be working with Dr. Wellington Muchero to identify proteins and pathways that are crucial to xylan synthesis in *Populus*.

Breeanna Urbanowicz background

- Breeanna is an Assistant Research Scientist at The University of Georgia (UGA) Complex Carbohydrate Research Center. Her research is focused on understanding the integral steps in the molecular pathways used by plants to synthesize complex polysaccharides. She has 27 publications.
- Breeanna has a Bachelor's Degree in Biology from Purdue University, and a PhD from Cornell University. Prior to her junior faculty position, Dr. Urbanowicz was a Postdoctoral Fellow (2008-2013) in the Department of Biochemistry and Molecular Biology at the University of Georgia.



Breeanna Urbanowicz